



**Sailing Instructions  
J/Fest 2019  
January 25, 26, 27, 2019  
St Petersburg Yacht Club  
Organizing Authority- St Petersburg Yacht Club**

**1. RULES**

- 1.1 The regatta will be governed by the rules as defined in The Racing Rules of Sailing 2017-2020 (RRS).
- 1.2 Except for breaches of RRS 28 and RRS 2 the jury may impose suitable penalties (DPI), other than disqualification, for violations of non-Part 2 rules of RRS. This changes RRS 64.1.
- 1.3 Appendix V – Alternate Penalties and US Sailing Prescriptions will apply.
- 1.4 The Equipment Rules of Sailing will apply.
- 1.5 RRS 63.7 shall be replaced by- “If there is a conflict between the Notice of Race (NOR) and the Sailing Instructions (SI’s), the Sailing Instructions shall apply. This changes RRS 63.7.

**2. Notices to Competitors**

- 2.1 The Official Notice Board will be the Yacht Scoring Website for this event. If appropriate, copies of amendments may be placed on a supplementary Notice Board located at St. Petersburg Sailing Center. It is the responsibility of each competitor to check the Official Notice Board for any amendments or other notices.
- 2.2 Protest/Jury Notices, including the schedule of protests and requests for redress, will be posted on the Official Notice Board and on the Jury Notice Board located outside of the Jury room.
- 2.3 The Race Committee may make broadcasts ashore on the designated channels before, during, or after racing for Safety and Race Committee Communications to competitors. The timing, order of the broadcast, or the failure of competitors to hear the broadcast, will not be grounds for redress. This changes Rule 60.1(b).
- 2.4 Safety and other information when afloat will be broadcast on VHF channel “63”.

**3. CHANGES TO SAILING INSTRUCTIONS**

- 3.1 Any changes to the sailing instructions will be posted before 0800 on the day it will take effect, except that any change to the schedule of races will be posted by the end of protest time on the day before it will take effect.

**4. SIGNALS MADE ASHORE**

- 4.1 Signals made ashore will be displayed on the flag pole on the south side of the SPSC and at the SPYC Clubhouse flag pole on the east side of the building.
  - 4.2 When code flag AP is displayed ashore, ‘1 minute’ is replaced with ‘not less than 60 minutes’ in the Race Signals AP. This changes RRS Race Signals.
-

- 4.3 When code flag Y is displayed ashore and/or on the Committee Boat, RRS 40 applies at all times while afloat. This changes RRS Part 4 preamble.

## **5. SCHEDULE & FORMAT**

- 5.1 Ten (10) races are scheduled
- 5.2 Thursday 24 January 1500-1730 Registration SPYC Regatta Room  
1800 Competitors Meeting & Cookout  
SPYC Tiki Bar
- Friday 25 January 1000 First Warning Signal
- Saturday 26 January 1000 First Warning Signal  
1800 Happy Hour  
1900 Dinner
- Sunday 27 February 1000 First Warning Signal  
1400 No Warning Signal after this time

## **6. CLASS FLAG**

- 6.1 Flag assignments are White-J/70  
Yellow-J/88  
Purple-J/111

## **7. RACE AREA**

- 7.1 Attachment A shows the location of the racing areas.

## **8. THE COURSES**

- 8.1 The course to be sailed will be windward-leeward. The diagrams in Attachment B shows the courses, including the order in which marks are to be passed, and the side on which each mark is to be left.
- 8.2 No later than the warning signal, the race committee boat will display on a board the course to be sailed, approximate compass bearing and the length of the first leg.

## **9. MARKS**

- 9.1 Description of the marks:
- Mark 1 for J/70's and J/88's will be an inflatable green tetrahedron.
  - Mark 1 for J/111's will be an orange tetrahedron.
  - The Offset mark (OS) will be an orange ball.
  - 2s/2p will be inflatable green tetrahedrons.
  - New marks, as provided in SI 11, will be inflatable yellow marks.
  - The starting and finishing marks will be orange balls.

## **10. THE START**

- 10.1 The Order of Starts will be:  
J/111 Purple Class Flag  
J/88 Yellow Class Flag  
J/70 White Class Flag
- 10.2 The starting line will be between a staff displaying an orange flag on the Race Committee Signal Boat and an orange ball.
- 10.3 A boat starting later than 5 minutes after her starting signal will be scored Did Not Start without a hearing. This changes RRS A4 and A5.
-

- 10.4 Boats subject to individual recall (RRS 29.1) and boats disqualified under RRS 30.3 and 30.4 may be broadcast on the VHF channel 63 using sail numbers. This is in addition to and changes RRS 29.1, 30.3 and 30.4.
- 10.5 The RC signal boat will, after the starting signal, attempt to hail the sail numbers of boats who are OCS on VHF Channel 63. The delay of such a hail, or failure of a competitor to hear such a hail, shall not be grounds for granting redress; this changes RRS 62.1(a).
- 11. CHANGE OF THE NEXT LEG OF THE COURSE**
- 11.1 To change the next leg of the course, the race committee will lay a new mark (or move the finishing line) and remove the original mark as soon as practicable. The change of course mark will be for all Classes. When in a subsequent change a new mark is replaced, it will be replaced by an original mark.
- 11.2 If a change of course is signaled at mark OS, marks 2s/2p may be substituted by a single mark to be left to port.
- 12. THE FINISH**
- 12.1 The finishing line will be between a staff displaying an orange flag on the finish boat and an orange ball.
- 13. PENALTY SYSTEM**
- 13.1 US Sailing Appendix T for Arbitration and Appendix V for Alternative Penalties will apply.
- 13.2 Unless the course is shortened to finish at the windward mark, penalties while in the zone of the windward mark or on the offset leg may be delayed and taken as soon as possible on the downwind leg. This changes RRS 44.2.
- 14. TIME LIMITS AND TARGET TIMES**
- 14.1 The target time for each race is 55-65 minutes. Failure to meet the target time shall not be grounds for granting redress. This changes RRS 60.1(b) and 62.1(a).
- 14.2 Boats failing to finish within 20 minutes after the first boat sails the course and finishes will be scored DNF. This changes RRS 35, A4 and A5.
- 14.3 The RC will lower the orange flag with one sound to indicate that the finish line is closed. The time limit for the first boat to sail the course and finish is two hours.
- 14.4 If no boat has passed the first mark within 30 minutes after the start, the race will be abandoned.
- 15. PROTESTS AND REQUESTS FOR REDRESS**
- 15.1 Boats that intend to protest shall notify the Race Committee finishing boat as soon as possible after finishing and wait for an acknowledgement of their request.
- 15.2 The jury desk and jury room will be located in the upstairs classroom at the top of the center stairwell of the SPSC.
- 15.3 Protests and requests for redress or reopening forms will be available at the jury desk.
- 15.4 Protests and requests for redress or reopening forms shall be delivered to the jury desk within the appropriate time limit.
-

- 15.5 The protest time limit is 45 minutes after the race committee signal boat docks. The protest time limit will be posted on the official notice board. The same time limit applies to protests by the race committee and jury about incidents they observe in the racing area and for requests for redress. This changes RRS 61.3 and 62.2.
- 15.6 Notices will be posted no later than 30 minutes after the protest time limit to inform competitors of hearings in which they are parties or named as witnesses.
- 15.7 Notices of protests by the RC or jury will be posted to inform boats under RRS 61.1(b).
- 15.8 Breaches of SI 1.4, 17, 18, 21, 22, 23, 24, and 25 will not be grounds for a protest by a boat. This changes RRS 60.1(a). Penalties for these breaches will be at the discretion of the jury (DPI: Discretionary Penalty Imposed).
- 15.9 On the last scheduled day of racing a request for reopening a hearing shall be delivered within the protest time limit if the requesting party was informed of the decision on the previous day; and no later than 30 minutes after the requesting party was informed of the decision on that day. This changes RRS 66.
- 15.10 On the last day of racing a request for redress based on a jury decision shall be delivered no later than 30 minutes after the decision was posted. This changes RRS 62.2.

## **16. SCORING**

- 16.1 Scoring will be in accordance with RRS 90.3 and Appendix A2.
- 16.2 When five or more races have been completed a boat's series score will be the total of her race scores excluding her worst score.
- 16.2 Three (3) completed races during the Series are required to constitute a regatta.

## **17. SAFETY REGULATIONS**

- 17.1 Safety equipment shall be carried in accordance with your Class Rules.
- 17.2 Boats that retire from a race shall notify the race committee as soon as possible.
- 17.3 Boats not leaving the harbor for any of the day's racing shall so inform the RC.

## **18. REPLACEMENTS OF CREW OR EQUIPMENT**

- 18.1 Substitution or change in number of competitors will not be allowed without prior written approval of the Principal Race Officer (PRO).
- 18.2 Substitution of damaged or lost equipment will not be allowed unless authorized by the Organizing Authority. Requests for substitution shall be made to the PRO at the first reasonable opportunity.

## **19. EQUIPMENT AND MEASUREMENT CHECKS**

- 19.1 A boat or equipment may be inspected at any time for compliance with the class rules and sailing instructions.

## **20. OFFICIAL BOATS**

- 20.1 Official boats will be marked as follows:

<b><u>Category</u></b>	<b><u>Flag</u></b>
Coach and Support Boats	Blue flag with white number

## **21. SUPPORT PERSONS**

- 21.1 Support, including coach, press, private and spectator boats shall register at the Race Office during the registration period and be issued an identity flag, such flag to be prominently displayed at all times when afloat. The person in charge of the competing boat(s) to which support boats are attached shall acknowledge the presence of a support boat on his registration form and pay any fee for the support boat decided by the OA.
- 21.2 Team leaders, coaches and other support boats shall stay more than 100 yards to leeward of the starting line, leeward marks and from any racing boats at all times.
- 21.3 Any support boats entering the restricted area or impeding a competitor or the Race Committee shall be liable to a discretionary penalty imposed by the Jury on their competing boat for breach of this SI.
- 21.4 At all times, support boats shall comply with the directions given by the Race Committee. In particular this includes assisting with rescues when requested to do so.
- 21.5 Support boats must be on call on VHF channel 63 at all times.

## **22. BERTHING**

- 22.1 Boats shall be kept in their assigned place as directed by the OA and RC when either afloat or ashore.

## **23. TRASH DISPOSALS**

- 23.1 Trash may be placed on board support or official boats or be placed in trash cans at the SPSC.

## **24. HAUL-OUT RESTRICTIONS AND OTHER RESTRICTIONS**

- 24.1 Boats shall be afloat by 1800 on Thursday January 18, 2018.
- 24.2 Boats shall not be hauled out and rudders shall remain in the water during the regatta, except with and according to the terms of prior written permission of the race committee.
- 24.3 Boats shall not use dehumidifiers during the regatta between 1800 Thursday January 18 and the end of racing on Sunday January 21.

## **25. RADIO COMMUNICATION**

- 25.1 Except in an emergency, a boat shall neither make radio transmissions while racing nor receive radio communications not available to all boats. This restriction also applies to mobile telephones.
- 25.2 The RC will use VHF channel 63 to communicate with the fleet. It is strongly encouraged that each boat has a VHF radio on board.

## **26. PRIZES**

- 26.1 Prizes will be given in accordance with the Notice of Race.
- 26.2 Additional prizes may be awarded at the discretion of the Organizing Authority.

## **27. LIABILITY & MEDIA WAIVERS**

- 27.1 Competitors participate in this regatta at their own risk. See RRS 4, Decision to Race. The St Petersburg Yacht Club, organizing authority, sponsors, race committee, officers and board of directors of SPYC, and
-

all those involved in these organizations will not accept Liability/Responsibility for material damage or personal injury or death sustained in conjunction with or prior to, during and after this regatta.

- 27.2 Each person racing on board a boat entered in the regatta shall complete the online liability & media waiver available on the regatta website.

**28. INSURANCE**

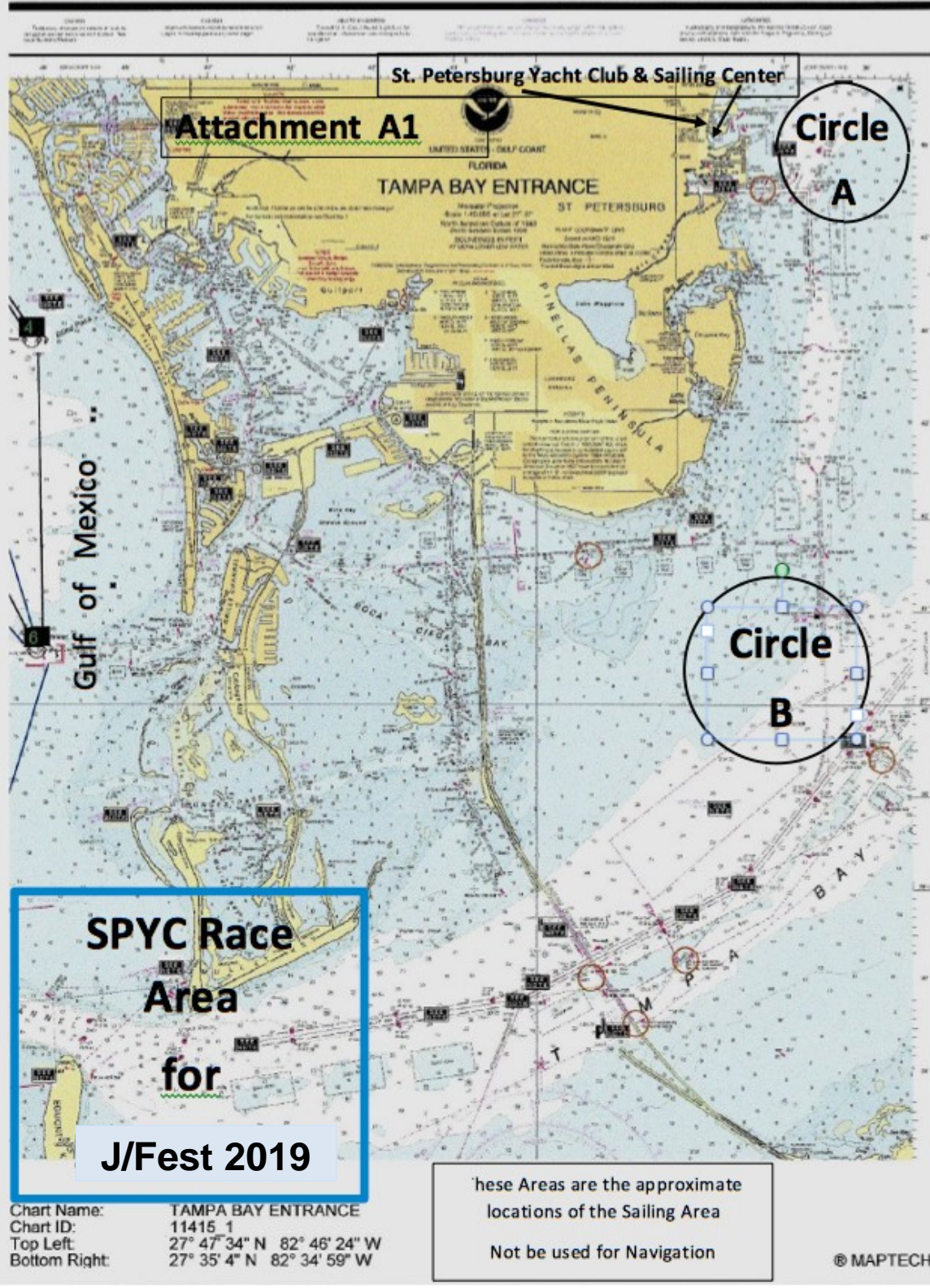
- 28.1 Each participating crew shall hold a valid insurance certificate showing proof of third-party liability coverage of at least \$300,000 (or equivalent) per incident.

**30. FURTHER INFORMATION**

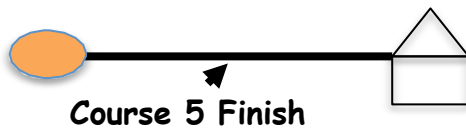
For further information please contact:

**Event Chair:** Kathy Ahern 703-855-6105

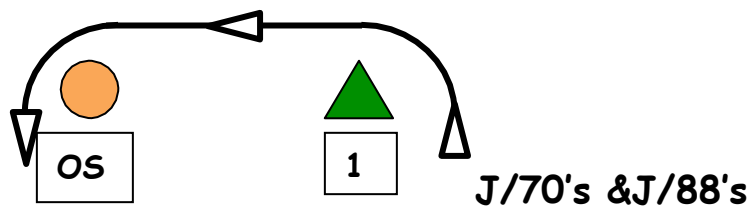
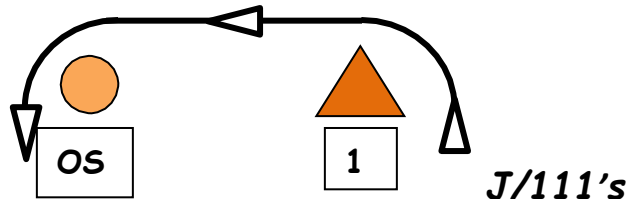
**St Pete YC Sailing Office:** Shawn Macking (727) 822-3113



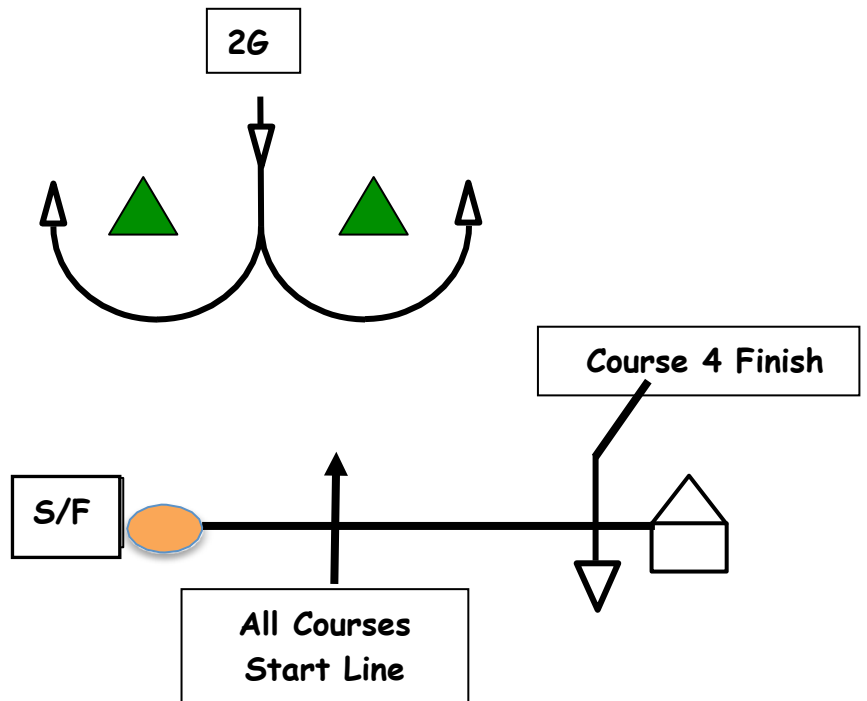
# Attachment B WINDWARD-LEEWARD COURSE DIAGRAM



  
NEW MARK



NOT TO SCALE



**COURSE 4: START-1(port)-OS(port)-2s/2p-1(port)-OS(port)-FINISH**  
**COURSE 5: START-1(port)-OS(port)-2s/2p-1(port)-OS(port)-2s/2p-FINISH**